

CW-Tip 20110130

Add Additional Strategies - The easy way!

Starting from CAMWorks 2011 and onwards, you no longer need to launch the Tech D/B to add additional strategies.

Simply right click on any CAMWorks Feature in feature tree and select 'save operation Plan...'. As shown in Figure 1.

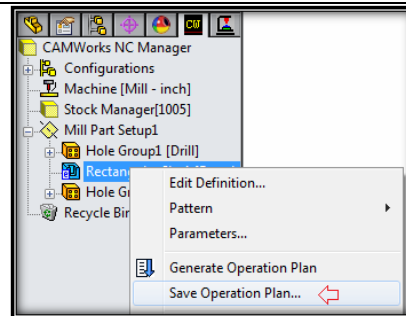


Figure 1 Save Operation Plan

A new dialog (Figure 2) will appear with the option to Select an existing strategy or create a New strategy.

Now when you select '[New]' option under strategy, the 'New strategy:' field will become active.

Type in a name for your strategy (For example, Rough-New) and click on the green check mark button at the top of the dialog.

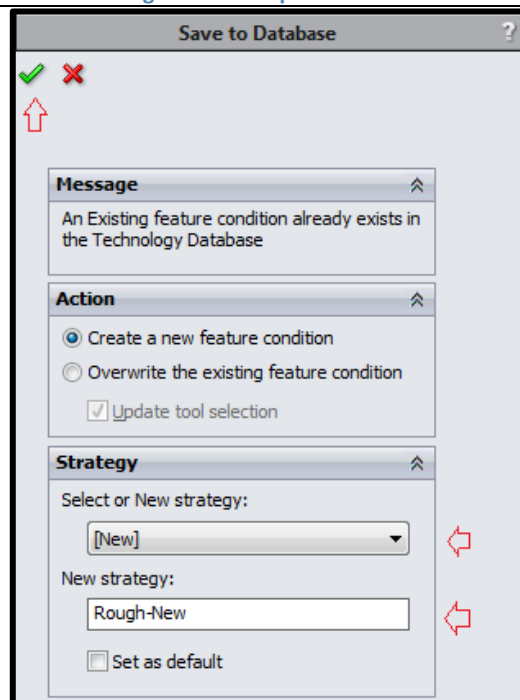


Figure 2 Select Strategy Dialog

Above step would open up "Create Feature Condition" dialog as shown in Figure 3. Here, you can add this new feature condition to CAMWorks database.

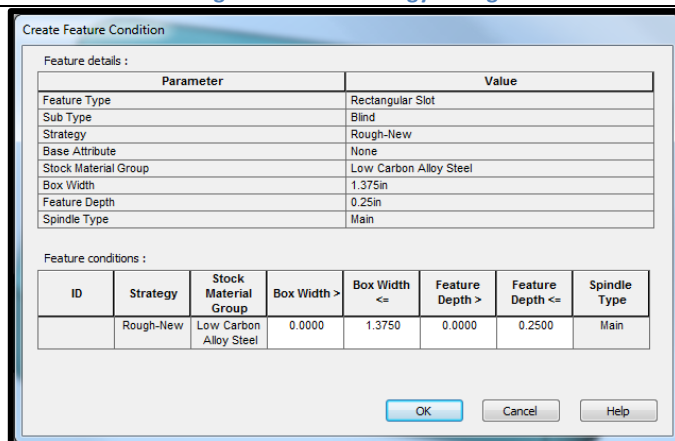


Figure 3 Create Feature Condition